



SONAROL

**PRODUCT
CATALOG**

Front end loader

LC 10/15/20/100/200



Supporting structure

KW01



Supporting structure

KW02



LC	Units	LC SNR 10	LC SNR 15	LC SNR 20	LC SNR 20L	LC SNR 100	LC SNR 100L	LC SNR 200	LC SNR 200L
Nominal Lifting capacity on the axis capacity	kg	450	450	650		800		1200	
Hydraulic cylinders	mm	50/50	50/50	50/50		63/50		63/63	
Lifting height (A)	mm	1850	2000	2800		3100		3400	
Loading height (B)	mm	1650	1800	2500		2800		3100	
Digging depth (C)	mm	50-100	50-100	100-150		100-200		100-200	
Bucket closing angle at a lower position (D)	°	48	48	46		46		46	
Bucket closing angle at upper position (E)	°	55	55	58		58		58	
Bucket tilting angle at an upper position (F)	°	58	58	61		61		61	
Bucket tilting angle at a lower position (G)	°	58	58	60		60		75	
Device weight	kg	180	190	270		330		370	
Pressure in the hydraulic system	MPa	18	18	18	18	18	18	18	18
Shock absorber switch on/off in the joystick		not available	not available	standard	not available	standard	not available	standard	not available
Support structure number		KW01	KW01	KW01	KW01	KW02	KW02	KW02	KW02
Price of supporting structure of front loader	€	-	-	-	-	-	-	-	-
Price of front loader boom	€	-	-	-	-	-	-	-	-
Price of a ready-to-install set	€	-	-	-	-	-	-	-	-
Color dedicated to the tractor brand	€					-			
Quick coupler of the hydraulic distributor	€					-			
Tool box "EURO" closed hydraulically	€					-			
Factory Assembly	€					-			
Electric control - proportional	€					-			

"EURO" semi-automatic tool mounting frame as standard, other extra payment acc. the official price list of spare parts.

Scanning of the tractor in the factory to design and manufacture a new supporting structure with assembly included in the price.

Factory assembly carried out in the production plant after consultation with RKS.

The cost of making a new mounting not included in the list of supporting structures for front loaders + measurements at the manufacturer's headquarters, depends on the year of the tractor:

Year	Measurement cost (€)	Installation
2016 - and newer	IN PRICE	IN PRICE
2011-2015	-	IN PRICE
2010 and older	-	IN PRICE

If the tractor is equipped with a front three-point hitch and the manufacturer did not take into account the presence of the front linkage when designing - an additional payment should be added.

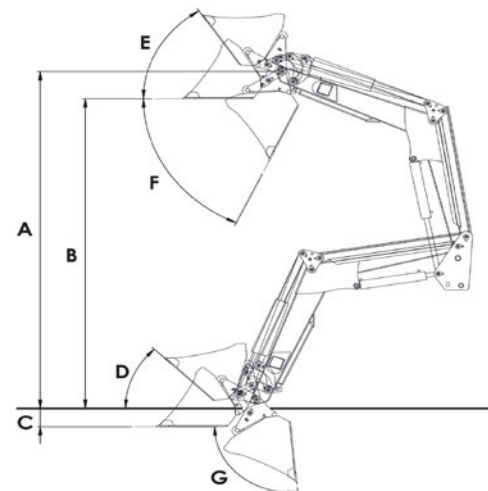
-

Front end loader **SONAROL**

Front end loaders

Front end loader

ŁC 300/400/500/600



Supporting structure

KW03



ŁC

	Units	ŁC SNR 300	ŁC SNR 300L	ŁC SNR 400	ŁC SNR 400L	ŁC SNR 500	ŁC SNR 500L	ŁC SNR 600
Nominal Lifting capacity on the axis capacity	kg	1600		1800		1800		1800
Hydraulic cylinders	mm	70/80		80/80		90/80		90/80
Lifting height (A)	mm	3500		3700		4000		4250
Loading height (B)	mm	3200		3400		3700		3950
Digging depth (C)	mm	50-200		50-200		50-200		50-200
Bucket closing angle at a lower position (D)	°	45		45		45		45
Bucket closing angle at upper position (E)	°	57		57		57		57
Bucket tilting angle at an upper position (F)	°	65		65		65		65
Bucket tilting angle at an lower position (G)	°	95		95		95		95
Device weight	kg	520		560		625		700
Pressure in the hydraulic system	MPa	18		18		18		18
Shock absorber switch on/off in the joystick		standard	not available	standard	not available	standard	not available	standard
Support structure number		KW03	KW03	KW03	KW03	KW03	KW03	KW03
Price of supporting structure of front loader	€	-	-	-	-	-	-	-
Price of front loader boom	€	-	-	-	-	-	-	-
Price of a ready-to-install set	€	-	-	-	-	-	-	-
Color dedicated to the tractor brand	€							
Quick coupler of the hydraulic distributor	€							
Tool box "EURO" closed hydraulically	€							
Factory Assembly	€							
Electric control - proportional	€							

"EURO" semi-automatic tool mounting frame as standard, other extra payment acc. the official price list of spare parts.

Scanning of the tractor in the factory to design and manufacture a new supporting structure with assembly included in the price.

Factory assembly carried out in the production plant after consultation with RKS.

The cost of making a new mounting not included in the list of supporting structures for front loaders + measurements at the manufacturer's headquarters, depends on the year of the tractor:

Year	Measurement cost (€)	Installation
2016 - and newer	IN PRICE	IN PRICE
2011-2015	-	IN PRICE
2010 and older	-	IN PRICE

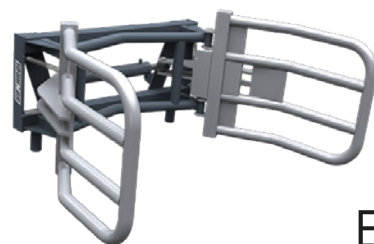
If the tractor is equipped with a front three-point hitch and the manufacturer did not take into account the presence of the front linkage when designing - an additional payment should be added.

CBE

	Units	CBE SNR 1500
Width	mm	1550
Load Capacity	kg	700
Device weight	kg	180
Pressure in the hydraulic system	MPa	18
Price	€	-

If the manufacturer allows mounting other than that used in Euro/MX/SMS front loaders.

Mini charger surcharge, depending on the technical conditions (e.g. mounting width, height).	-
Telescopic loaders surcharge, depending on the technical conditions (e.g. mounting width, height).	-
Pressure limiter additional payment necessary for attachments other than those used in front loaders.	-
Hydraulic lock required for wheeled and telescopic loaders without supporting the third hydraulic section- additional payment.	-



Bale
clamp

CB

	Units	CB SNR 1700
Width	mm	1700
Load Capacity	kg	900
Device weight	kg	215
Pressure in the hydraulic system	MPa	18
Price	€	-

If the manufacturer allows mounting other than that used in Euro/MX/SMS front loaders.

Mini charger surcharge, depending on the technical conditions (e.g. mounting width, height).	-
Telescopic loaders surcharge, depending on the technical conditions (e.g. mounting width, height).	-
Pressure limiter additional payment necessary for attachments other than those used in front loaders.	-
Hydraulic lock required for wheeled and telescopic loaders without supporting the third hydraulic section- additional payment.	-



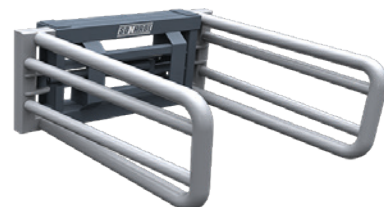
Bale
clamp

CBP

	Units	CBP SNR 2300
Width	mm	2300
Load Capacity	kg	900
Device weight	kg	270
Pressure in the hydraulic system	MPa	18
Price	€	-

If the manufacturer allows mounting other than that used in Euro/MX/SMS front loaders.

Mini charger surcharge, depending on the technical conditions (e.g. mounting width, height).	-
Telescopic loaders surcharge, depending on the technical conditions (e.g. mounting width, height).	-
Pressure limiter additional payment necessary for attachments other than those used in front loaders.	-
Hydraulic lock required for wheeled and telescopic loaders without supporting the third hydraulic section- additional payment.	-



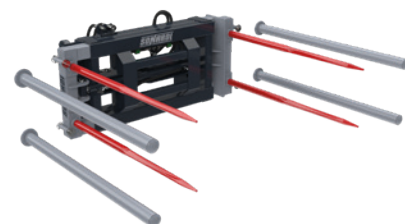
Square bale
gripper

CBPZ

	Units	CBPZ SNR 2500
Width	mm	2500
Load Capacity	kg	900
Device weight	kg	320
Pressure in the hydraulic system	Mpa	18
Price	€	-

If the manufacturer allows mounting other than that used in Euro/MX/SMS front loaders.

Mini charger surcharge, depending on the technical conditions (e.g. mounting width, height).	-
Telescopic loaders surcharge, depending on the technical conditions (e.g. mounting width, height).	-
Pressure limiter additional payment necessary for attachments other than those used in front loaders.	-
Hydraulic lock required for wheeled and telescopic loaders without supporting the third hydraulic section- additional payment.	-



Square bale gripper
with teeth

Clamps

Equipment for front end loaders

SONAROL

CWB

	Units	CWB SNR
Width	mm	1500
Load Capacity	kg	1200
Device weight	kg	280
Pressure in the hydraulic system	MPa	18
Price of set	€	-
Set without the teth frame price	€	-
The teth frame price	€	-

If the manufacturer allows mounting other than that used in Euro/MX/SMS front loaders.

Mini charger surcharge, depending on the technical conditions (e.g. mounting width, height).

Telescopic loaders surcharge, depending on the technical conditions (e.g. mounting width, height).

Pressure limiter.

Hydraulic lock required for wheeled and telescopic loaders without supporting the third hydraulic section- additional payment.

nadstawka



Multifunctional
bale grapple

CBC

	Units	CBC SNR 2000 UKŁAD A	CBC SNR 2000 UKŁAD B
Height	mm	1796	1715
Folded width	mm	1221	1170
Spreading width	mm	1746	1652(2795) ¹
Compound depth	mm	531(12780) ²	1350
Decomposed depth	mm	765	1300
Device weight	kg	327	323
Pressure in the hydraulic system	MPa	18	18
Price A/Price B	€	-	-
Price of set	€	-	-
Arms with teth "A"	€	-	-
Arms to foil "B"	€	-	-

1 – Layout A

2 – Layout B

Set weight 450kg

Set contains "Scheme A" and "Scheme B"

Mounting "CYBANT" screw fastening included in price, avible if the allow technical conditions of the device.

If the manufacturer allows mounting other than that used in Euro/MX/SMS front loaders.

Mini charger surcharge, depending on the technical conditions (e.g. mounting width, height).

Telescopic loaders surcharge, depending on the technical conditions (e.g. mounting width, height).

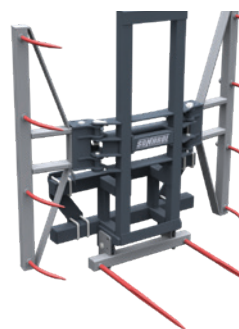
Pressure limiter additional payment necessary for attachments other than those used in front loaders.

Hydraulic lock required for wheeled and telescopic loaders without supporting the third hydraulic section- additional payment.



Set

Bale clamp
combi



Scheme A

Working with bales and cubes - not wrapped in foil



Scheme B

Working with bales – wrapped

CD/CDM

	Units	CD	CDM
Width	mm	1200	1200
Load Capacity	kg	1000	1100
Load Capacity	kg	1300	1000
Device weight	kg	300	177
Pressure in the hydraulic system	MPa	18	18
Price	€	-	-

If the manufacturer allows mounting other than that used in Euro/MX/SMS front loaders.

Mini charger surcharge, depending on the technical conditions (e.g. mounting width, height).

Telescopic loaders surcharge, depending on the technical conditions (e.g. mounting width, height).

Pressure limiter additional payment necessary for attachments other than those used in front loaders.

Hydraulic lock required for wheeled and telescopic loaders without supporting the third hydraulic section- additional payment.



CD



CDM

Wood logs
grab

ŁKP

	Units	ŁKP SNR 1400	ŁKP SNR 1500	ŁKP SNR 1600	ŁKP SNR 1800	ŁKP SNR 2000	ŁKP SNR 2200	ŁKP SNR 2400
Width	mm	1400	1500	1600	1800	2000	2220	2400
Height	mm	960	960	960	960	960	960	960
Load Capacity	mm	1500	1500	1500	1500	1500	1500	1500
Capacity	m³	0,70	0,80	0,90	1,00	1,10	1,20	1,30
Device weight	kg	462	485	510	535	560	600	625
Load Capacity	kg	840	960	1080	1200	1320	1440	1560
Number of hydraulic cylinders	pcs.	2	2	2	2	2	2	2
Pressure in the hydraulic system	MPa	18	18	18	18	18	18	18
Price	€	-	-	-	-	-	-	-

Lifting capacity given for agricultural products and loose materials 1m³-1200kg.

If the manufacturer allows mounting other than that used in Euro/MX/SMS front loaders.

Mini charger surcharge, depending on the technical conditions (e.g. mounting width, height).

Telescopic loaders surcharge, depending on the technical conditions (e.g. mounting width, height).

Pressure limiter additional payment necessary for attachments other than those used in front loaders.

Hydraulic lock required for wheeled and telescopic loaders without supporting the third hydraulic section- additional payment.

Screw-on double beveled blade additional payment.

ŁK

	Units	ŁK SNR 900	ŁK SNR 1000	ŁK SNR 1250	ŁK SNR 1500	ŁK SNR 1800	ŁK SNR 2100
Width	mm	900	1000	1250	1500	1800	2100
Height	mm	850	850	850	850	850	850
Load Capacity	mm	1350	1350	1350	1350	1350	1350
Capacity	m³	0,60	0,67	0,83	1,00	1,20	1,40
Device weight	kg	215	225	260	300	340	385
Load Capacity	kg	480	540	660	780	940	1100
Number of teeth	pcs.	4	4	5	6	7	8
Number of hydraulic cylinders	pcs.	2	2	2	2	2	2
Pressure in the hydraulic system	MPa	18	18	18	18	18	18
Price	€	-	-	-	-	-	-

Lifting capacity given for manure 1m³.

If the manufacturer allows mounting other than that used in Euro/MX/SMS front loaders.

Mini charger surcharge, depending on the technical conditions (e.g. mounting width, height).

Telescopic loaders surcharge, depending on the technical conditions (e.g. mounting width, height).

Pressure limiter additional payment necessary for attachments other than those used in front loaders.

Hydraulic lock required for wheeled and telescopic loaders without supporting the third hydraulic section- additional payment.

Screw-on double beveled blade additional payment.

CK

	Units	CK SNR 900	CK SNR 1000	CK SNR 1250	CK SNR 1500	CK SNR 1800	CK SNR 2100	CK SNR 2200	CK SNR 2400
Width	mm	900	1000	1250	1500	1800	2100	2200	2400
Height	mm	850	850	850	850	850	850	850	850
Load Capacity	mm	1350	1350	1350	1350	1350	1350	1350	1350
Capacity	m³	0,57	0,63	0,79	0,95	1,13	1,32	1,39	1,51
Device weight	kg	180	195	225	250	290	330	350	415
Load Capacity	kg	460	505	630	750	900	1050	1100	1200
Number of teeth	pcs.	4+4	5+4	6+5	7+6	8+7	9+8	10+10	10+9
Number of hydraulic cylinders	pcs.	2	2	2	2	2	2	2	2
Pressure in the hydraulic system	Mpa	18	18	18	18	18	18	18	18
Price	€	-	-	-	-	-	-	-	-

Lifting capacity given for manure 1m³.

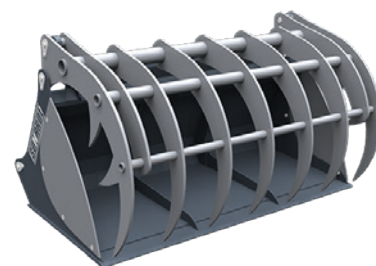
If the manufacturer allows mounting other than that used in Euro/MX/SMS front loaders.

Mini charger surcharge, depending on the technical conditions (e.g. mounting width, height).

Telescopic loaders surcharge, depending on the technical conditions (e.g. mounting width, height).

Pressure limiter additional payment necessary for attachments other than those used in front loaders.

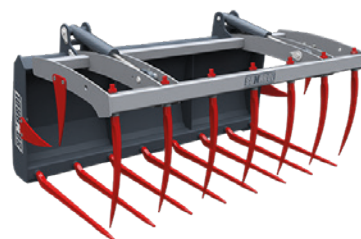
Hydraulic lock required for wheeled and telescopic loaders without supporting the third hydraulic section- additional payment.



Bucket-crocodile tempered tines



Bucket-crocodile clamp



Crocodile clamp

Cutters

Equipment for front end loaders

SONAROL

W

	Units	W SNR 1600
Width	mm	1600
Height	mm	850
Load Capacity	mm	1350
Bucket capacity	m³	0,40
Device capacity	m³	0,93
Device weight	kg	600+120
Number of teeth	pcs.	10+2
Number of hydraulic cylinders	pcs.	2
Pressure in the hydraulic system	MPa	18
Price of set	€	-
Set without bucket price	€	-

Attention! Front end loader with tool locking outside handle- reduction frame may be needed.

If the manufacturer allows mounting other than that used in Euro/MX/SMS front loaders.

Mini charger surcharge, depending on the technical conditions (e.g. mounting width, height). -

Telescopic loaders surcharge, depending on the technical conditions (e.g. mounting width, height). -

Pressure limiter additional payment necessary for attachments other than those used in front loaders. -

Hydraulic lock required for wheeled and telescopic loaders without supporting the third hydraulic section- additional payment. -



3in1

silage cutter

bale shearer with the functionality for holding the cut film or mesh

bucket for bulk materials

**Combi
cutter**

WK

	Units	WK SNR 1400	WK SNR 1600	WK SNR 2000
Width	mm	1400	1600	2000
Height	mm	850	850	850
Load Capacity	mm	950	950	950
Capacity	m³	0,82	1,00	1,26
Device weight	kg	470	520	660
Number of teeth	pcs.	8+2	10+2	12+4
Number of hydraulic cylinders	pcs.	2	2	2
Pressure in the hydraulic system	MPa	18	18	18
Price	€	-	-	-

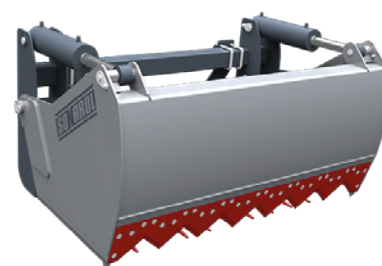
If the manufacturer allows mounting other than that used in Euro/MX/SMS front loaders.

Mini charger surcharge, depending on the technical conditions (e.g. mounting width, height). -

Telescopic loaders surcharge, depending on the technical conditions (e.g. mounting width, height). -

Pressure limiter additional payment necessary for attachments other than those used in front loaders. -

Hydraulic lock required for wheeled and telescopic loaders without supporting the third hydraulic section- additional payment. -



**Cutter
for silage**

RB

	Units	RB SNR 1600
Width	mm	1600
Folded height	mm	730
Open Height	mm	1570
Length	mm	1150
Load Capacity	mm	1250
Device weight	kg	400
Number of teeth	pcs.	5
Number of hydraulic cylinders	pcs.	2
Pressure in the hydraulic system	MPa	18
Price	€	-

If the manufacturer allows mounting other than that used in Euro/MX/SMS front loaders.

Mini charger surcharge, depending on the technical conditions (e.g. mounting width, height). -

Telescopic loaders surcharge, depending on the technical conditions (e.g. mounting width, height). -

Pressure limiter additional payment necessary for attachments other than those used in front loaders. -

Hydraulic lock required for wheeled and telescopic loaders without supporting the third hydraulic section- additional payment. -



**Bale cutter
"shark"**

ŁU	Units	ŁU SNR 1000	ŁU SNR 1200	ŁU SNR 1500	ŁU SNR 1800	ŁU SNR 2000	ŁU SNR 2200	ŁU SNR 2400
Width	mm	1000	1250	1500	1800	2000	2200	2400
Height	mm	650	650	650	650	650	650	650
Depth	mm	750	750	750	750	750	750	750
Capacity	m³	0,33	0,40	0,50	0,58	0,64	0,70	0,76
Device weight	kg	105	120	155	182	195	225	245
Load Capacity	kg	550	660	825	960	1060	1160	1260
Price	€	-	-	-	-	-	-	-

Lifting capacity given for wet sand 1m3-1650kg.

If the manufacturer allows mounting other than that used in Euro/MX/SMS front loaders.

Mini charger surcharge, depending on the technical conditions (e.g. mounting width, height).

Telescopic loaders surcharge, depending on the technical conditions (e.g. mounting width, height).

Screw-on double beveled blade additional payment.



Universal bucket

ŁUP	Units	ŁUP SNR 1000	ŁUP SNR 1100	ŁUP SNR 1200	ŁUP SNR 1300	ŁUP SNR 1400	ŁUP SNR 1500	ŁUP SNR 1800	ŁUP SNR 2000	ŁUP SNR 2200	ŁUP SNR 2400
Width	mm	1000	1100	1200	1300	1400	1500	1800	2000	2200	2400
Height	mm	800	800	800	800	800	800	800	800	800	800
Depth	mm	920	920	920	920	920	920	920	920	920	920
Capacity	m³	0,43	0,47	0,52	0,56	0,60	0,65	0,77	0,86	0,95	1,05
Device weight	kg	180	190	205	215	225	240	275	300	330	360
Load Capacity	kg	710	780	860	925	990	1080	1270	1420	1570	1730
Price	€	-	-	-	-	-	-	-	-	-	-

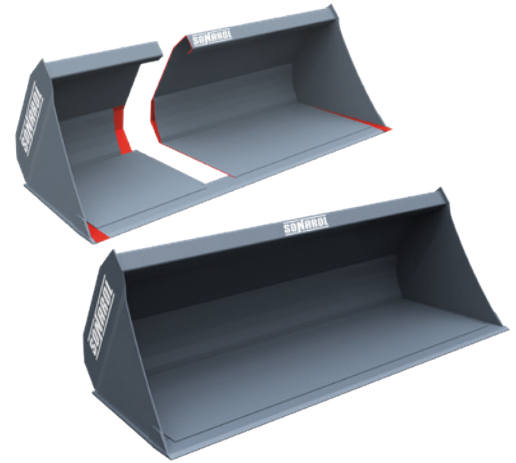
Lifting capacity given for wet sand 1m3-1650kg.

If the manufacturer allows mounting other than that used in Euro/MX/SMS front loaders.

Mini charger surcharge, depending on the technical conditions (e.g. mounting width, height).

Telescopic loaders surcharge, depending on the technical conditions (e.g. mounting width, height).

Screw-on double beveled blade additional payment.



Universal bucket without internal "ribs"

ŁW 4w1	Units	ŁW 4w1 SNR 1650	ŁW 4w1 SNR 1850	ŁW 4w1 SNR 2050	ŁW 4w1 SNR 2250	ŁW 4w1 SNR 2450
Width	mm	1650	1850	2050	2250	2450
Height	mm	870	870	870	870	870
Depth	mm	740	740	740	740	740
Capacity	m³	0,44	0,50	0,56	0,62	0,68
Device weight	kg	365	395	425	460	490
Load Capacity	kg	730	830	930	1030	1120
Number of hydraulic cylinders	pcs.	2	2	2	2	2
Pressure in the hydraulic system	Mpa	18	18	18	18	18
Price	€	-	-	-	-	-

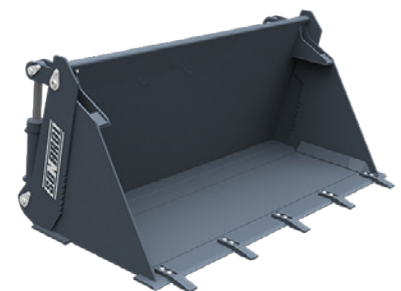
If the manufacturer allows mounting other than that used in Euro/MX/SMS front loaders.

Mini charger surcharge, depending on the technical conditions (e.g. mounting width, height).

Telescopic loaders surcharge, depending on the technical conditions (e.g. mounting width, height).

Pressure limiter additional payment necessary for attachments other than those used in front loaders.

Hydraulic lock required for wheeled and telescopic loaders without supporting the third hydraulic section- additional payment.



4 in 1 multi-purpose bucket

Buckets

Equipment for front end loaders

SONAROL

ŁA	Units	ŁA SNR 1800	ŁA SNR 2000	ŁA SNR 2200	ŁA SNR 2400
Width	mm	1800	2000	2200	2400
Height	mm	795	795	795	795
Depth	mm	1080	1080	1080	1080
Capacity	m³	1,10	1,20	1,35	1,45
Device weight	kg	285	315	345	375
Price	€	-	-	-	-

If the manufacturer allows mounting other than that used in Euro/MX/SMS front loaders.

Mini charger surcharge, depending on the technical conditions (e.g. mounting width, height).

Telescopic loaders surcharge, depending on the technical conditions (e.g. mounting width, height).



Openwork
bucket

ŁAL	Units	ŁAL SNR 1600	ŁAL SNR 1800	ŁAL SNR 2000	ŁAL SNR 2200	ŁAL SNR 2400
Width	mm	16000	1800	2000	2200	2400
Height	mm	700	700	700	700	700
Depth	mm	1050	1050	1050	1050	1050
Capacity	m³	0,65	0,74	0,83	0,92	1,00
Device weight	kg	260	280	310	330	355
weight of the insert	kg	60	65	70	82	80
Load Capacity	kg	650	740	830	920	1000
Price	€	-	-	-	-	-

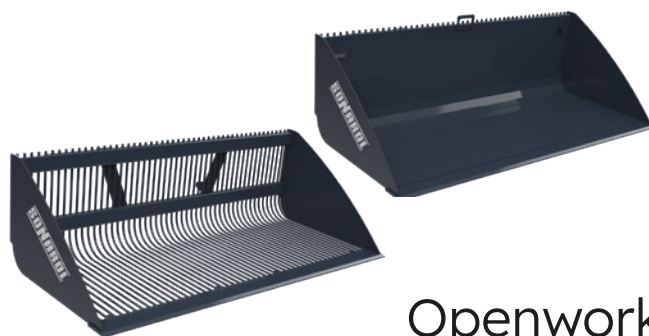
Bucket weight with insert.

The standard spoon insert is made of 3 mm thick sheet metal.

If the manufacturer allows mounting other than that used in Euro/MX/SMS front loaders.

Mini charger surcharge, depending on the technical conditions (e.g. mounting width, height).

Telescopic loaders surcharge, depending on the technical conditions (e.g. mounting width, height).



Openwork
bucket light

ŁWW	Units	ŁWW SNR 1400	ŁWW SNR 1600	ŁWW SNR 1800	ŁWW SNR 2000	ŁWW SNR 2200	ŁWW SNR 2400
Width	mm	1400	1600	1800	2000	2200	2400
Capacity	m³	0,54	0,62	0,70	0,78	0,86	0,94
Load Capacity	kg	640	745	840	930	1000	1100
Device weight	kg	345	370	395	420	445	470
Pressure in the hydraulic system	Mpa	18	18	18	18	18	18
Price	€	-	-	-	-	-	-

Mounting- Screw-on adapter.

The lifting capacity is given for agricultural products weighing 1m3-1200kg.

If the manufacturer allows mounting other than that used in Euro/MX/SMS front loaders.

Mini charger surcharge, depending on the technical conditions (e.g. mounting width, height).

Telescopic loaders surcharge, depending on the technical conditions (e.g. mounting width, height).

Hydraulic lock required for wheeled and telescopic loaders without supporting the third hydraulic section- additional payment.

Pressure limiter additional payment necessary for attachments other than those used in front loaders.



The high
tip bucket

WP

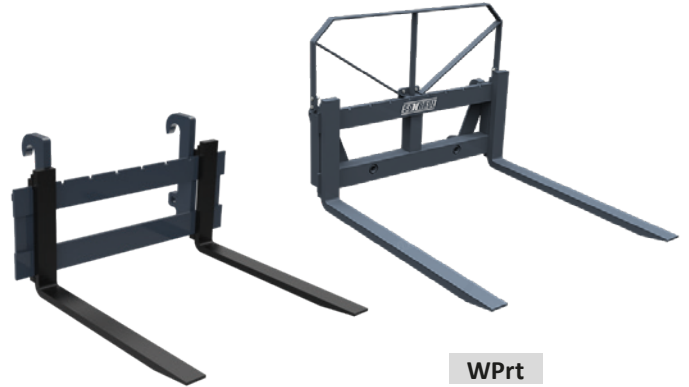
	Units	WP SNR 1000	WP SNR 2000	Wprt SNR 2000
Width	mm	1000/1200	1200	1200
Height	mm	470	850	850
Depth	mm	980	1350	1350
Load Capacity	kg	1000	2000	2000
Device weight	kg	90	160	165
Number of bushings	pcs.	not available	not available	2
Fork dimensions	mm	76x28x800 kat.1A	80x40x1200 kat.2	80x40x1200 kat.2
Protective frame		not available	not available	standard
Price	€	-	-	-
Tine	€			-
Suport frame without forks	€		-	-
Protective frame	€		-	-
Teeth for the frame		not available	not available	

If the manufacturer allows mounting other than that used in Euro/MX/SMS front loaders.

Special mounting (not from the manufacturer's official fixing table)

Mini charger surcharge, depending on the technical conditions (e.g. mounting width, height).

Telescopic loaders surcharge, depending on the technical conditions (e.g. mounting width, height).



WP

Wprt

Fork for pallets

PBH

	Units	PBH SNR
Width	mm	1320
Height	mm	500
Load Capacity	kg	900
Device weight	kg	237
Arm length	mm	1250
Teeth length	mm	1250
Distance between open teeth	mm	1375
Distance between closed teeth	mm	770
Pressure in the hydraulic system	Mpa	18
Price	€	-

EURO-TUZ mounting as standard.



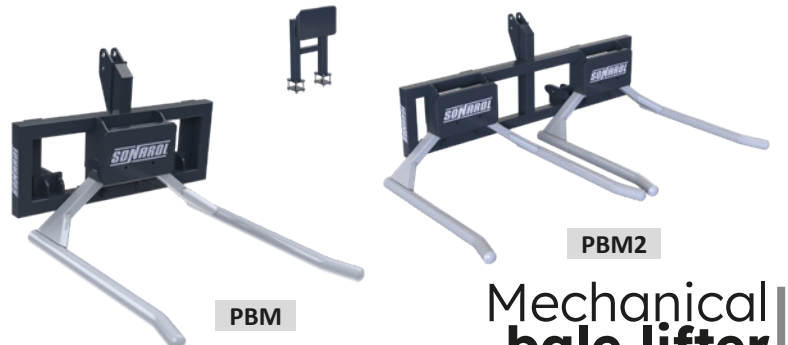
Hydraulic bale lifter

PBM

	Units	PBM	PBM2
Width	mm	1200	2085
Height	mm	490	490
Load Capacity	kg	900	1400
Device weight	kg	137	220
Number of teeth	pcs.	2	4
Teeth length	mm	1250	1250
Price	€	-	-
The teth frame price	€		-

EURO-TUZ mounting as standard.

The PBM2 lift can be equipped with an extension for loading a third bale.



PBM

PBM2

Mechanical bale lifter

Forks

Equipment for front end loaders

SONAROL

WB/WB4Z

	Units	WB SNR	WB4Z
Width	mm	1200	1500
Height	mm	600	600
Load Capacity	kg	1100	1500
Device weight	kg	70	100
Number of teeth	pcs.	2	4
Teeth length	mm	1100	1100
Price	€	-	-

If the manufacturer allows mounting other than that used in Euro/MX/SMS front loaders.

Mini charger surcharge, depending on the technical conditions (e.g. mounting width, height).

Telescopic loaders surcharge, depending on the technical conditions (e.g. mounting width, height).

EURO-TUZ mounting as standard.

Possibility to add a fifth tooth and use it as a general purpose fork



WB



WB4Z

**Bale
fork**

WO

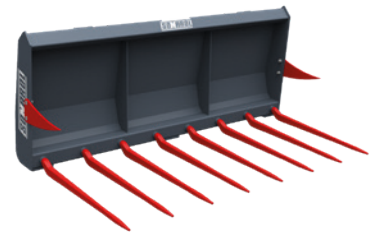
	Units	WO SNR 1250	WO SNR 1500	WO SNR 1800	WO SNR 2100
Width	mm	1250	1500	1800	2100
Height	mm	710	710	710	710
Capacity	m³	0,68	0,82	1,00	1,15
Load Capacity	kg	550	660	800	930
Device weight	kg	115	130	150	170
Number of teeth	pcs.	6	7	8	9
Price	€	-	-	-	-

Lifting capacity given for manure 1m³.

If the manufacturer allows mounting other than that used in Euro/MX/SMS front loaders.

Mini charger surcharge, depending on the technical conditions (e.g. mounting width, height).

Telescopic loaders surcharge, depending on the technical conditions (e.g. mounting width, height).



**Manure
fork**

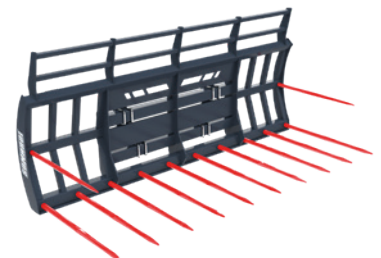
WZC

	Units	WZC SNR 2400	WZC SNR 2700	WZC SNR 3000
Width	mm	2400	2700	3000
Height	mm	1330	1330	1330
Device weight	kg	445	460	510
Number of lower teeth	pcs.	9	10	11
Teeth length	mm	1250	1250	1250
Price	€	-	-	-

If the manufacturer allows mounting other than that used in Euro/MX/SMS front loaders.

Mini charger surcharge, depending on the technical conditions (e.g. mounting width, height).

Telescopic loaders surcharge, depending on the technical conditions (e.g. mounting width, height).



**Forks for green fodder
fixing on u-bolts**

WSB

	Units	WSB
Width	mm	2100
Height	mm	2000
Decomposed depth	mm	1300
Compound depth	mm	680
Device weight	kg	260
Price	€	-

If the manufacturer allows mounting other than that used in Euro/MX/SMS front loaders.

Mini charger surcharge, depending on the technical conditions (e.g. mounting width, height).

Telescopic loaders surcharge, depending on the technical conditions (e.g. mounting width, height).



**Fodding
forks**

SŁL

	Units	SŁL SNR 1600	SŁL SNR 1800	SŁL SNR 2000
Width	mm	1600	1800	2000
Capacity	m³	0,90	1,00	1,10
Load Capacity	kg	560	560	560
Device weight	kg	345	360	375
Number of hydraulic cylinders	mm	1	1	1
Pressure in the hydraulic system	Mpa	18	18	18
Price	€	-	-	-

"EURO/TUZ cat.2" mounting as standard.



Light
cargo box

SŁC

	Units	SŁC SNR 1600	SŁC SNR 1800	SŁC SNR 2000	SŁC SNR 2200	SŁC SNR 2500
Width	mm	1600	1800	2000	2200	2400
Capacity	m³	1,00	1,10	1,25	1,35	1,45
Load Capacity	kg	1500	1500	1500	1500	1500
Device weight	kg	480	500	520	540	560
Number of hydraulic cylinders	mm	2	2	2	2	2
Pressure in the hydraulic system	Mpa	18	18	18	18	18
Price	€	-	-	-	-	-

"EURO/TUZ cat.2" mounting as standard.



Heavy
cargo box

OBC

	Units	OBC 200	OBC 300	OBC 600	OBC 800	OBC 1000	OBC 1200
Width	mm	410	545	856	886	896	906
Length	mm	350	490	605	706	861	982
Height	mm	370	400	546	596	596	596
High total	mm	585	585	786	876	883	883
Construction weight	kg	38	45	74	90	108	118
Weight with concrete	kg	200	300	600	800	1000	1200
Three-point category		TUZ.kat.1 Trójkąt kat.1	TUZ.kat.1 Trójkąt kat.1	2	3N	3N	3N
Price	€	-	-	-	-	-	-

Mounting included 3-point, lack of mounting balls- "ball hooks", ordered separately



Ballast

PB

	Units	PB SNR 1000
Load Capacity	kg	1000
Device weight	kg	110
Price	€	-

If the manufacturer allows mounting other than that used in Euro/MX/SMS front loaders.

Mini charger surcharge, depending on the technical conditions (e.g. mounting width, height).

Telescopic loaders surcharge, depending on the technical conditions (e.g. mounting width, height).



Big-bag
lifter

Three-point linkage equipment / telescopic loaders

SONAROL

RDP

	Units	RDP
Folded height	mm	1750
Unfolded height	mm	1450
Width unfolded (maximum)	mm	4600
Folded width (minimum)	mm	3000
Length	mm	2750
Device weight	kg	1200
Pressure in the hydraulic system	Mpa	18
Price	€	-

PTO drive shaft 900Nm kk1210(1500)- standard.
Three-point linkage mounting bracket as standard.
Connection via one hydraulic section.
Controlling the electrical device with a remote control from the tractor cabin.
Reversible gearbox- additional option.



Silage
spreader

PSA

	Units	PSA SNR 1200	PSA SNR 1400	PSA SNR 1600	PSA SNR 2000
Case width [A]	mm	1200	1400	1600	2000
Spreading width [B]	mm	1060	1260	1460	1860
Total width [C]	mm	1500	1700	1820	2220
Length [D]	mm	1200	1200	1200	1200
Height [E]	mm	1200	1200	1200	1200
Bucket capacity	m³	0,70	0,80	0,90	1,10
Device weight	kg	430	460	490	550
Pressure in the hydraulic system	Mpa	18	18	18	18
Price	€	-	-	-	-

Mounting included 3-point system.
Special mounting (not from the manufacturer's official fixing table)



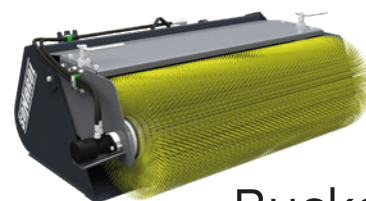
The self-loading
sand spreader

ŁS

	Units	ŁS SNR 1400	ŁS SNR 1600	ŁS SNR 1800	ŁS SNR 2000	ŁS SNR 2200	ŁS SNR 2400
Brush width [A]	mm	1400	1600	1800	2000	2200	2400
Overall width [B]	mm	1760	1960	2060	2360	2560	2760
Length	mm	1400	1400	1400	1400	1400	1400
Height	mm	765	765	765	765	765	765
Bucket capacity	m³	0,35	0,40	0,45	0,50	0,55	0,60
Device weight	kg	330	350	370	390	410	430
Brush diameter [ØE]	mm	600	600	600	600	600	600
Pressure in the hydraulic system	Mpa	18	18	18	18	18	18
Price	€	-	-	-	-	-	-

Mounting "CYBANT" screw fastening included in price, avible if the allow technical conditions of the device.

Special mounting (not from the manufacturer's official fixing table)	-
Mini charger surcharge, depending on the technical conditions (e.g. mounting width, height).	-
Telescopic loaders surcharge, depending on the technical conditions (e.g. mounting width, height).	-
Pressure limiter additional payment necessary for attachments other than those used in front loaders.	-
Hydraulic lock required for wheeled and telescopic loaders without supporting the third hydraulic section- additional payment.	-



Bucket
with the brush

ZM

	Units	ZM SNR 1400	ZM SNR 1600	ZM SNR 1800	ZM SNR 2000	ZM SNR 2200	ZM SNR 2400
Brush width [A]	mm	1400	1600	1800	2000	2200	2400
Overall width [B]	mm	1760	1960	2160	2360	2560	2760
Length	mm	1850	1850	1850	1850	1850	1850
Height	mm	1000	1000	1000	1000	1000	1000
Bucket capacity	m³	0,15	0,17	0,19	0,21	0,23	0,25
Device weight	kg	340	360	380	400	420	440
Brush diameter [RE]	mm	600	600	600	600	600	600
Water tank capacity	L	200	200	200	200	200	200
Pressure in the hydraulic system	Mpa	18	18	18	18	18	18
Price	€	-	-	-	-	-	-

Mounting "CYBANT" screw fastening included in price, avible if the allow technical conditions of the device.

Standard equipment:	
- terrain following system (transverse and longitudinal)	
- copying support wheel	
- marker for positioning the sweeper relative to the ground	
- hydraulic emptying of the waste basket	
- manual adjustment of the working angle	
- smooth brush height adjustment	
Optional equipment:	
- side brush left/right	-
- water sprinkler system	-



Sweeper

CKŁ	Units	CKŁ SNR 1800	CKŁ SNR 2100	CKŁ SNR 2400
Width	mm	1800	2100	2400
Height	mm	870	870	870
Open Height	mm	1370	1370	1370
Capacity	m³	1,2	1,4	1,56
Load Capacity	kg	940	1100	1250
Device weight	kg	350	380	425
Number of teeth	pcs.	8+7	9+8	10+9
Number of hydraulic cylinders	pcs.	2	2	2
Pressure in the hydraulic system	Mpa	18	18	18
Price	€	-	-	-

The lifting capacity is given for agricultural products weighing 1m3-1200kg.

Screw fixing for quick assembly included in price, available if the allow technical conditions of the device.

Special mounting (not from the manufacturer's official fixing table)

-

Hydraulic lock required for wheeled and telescopic loaders without supporting the third hydraulic section- additional payment.

-

ŁKŁ	Units	ŁKŁ SNR 1800	ŁKŁ SNR 2100	ŁKŁ SNR 2400
Width	mm	1800	2100	2400
Height	mm	850	850	850
Open Height	mm	1350	1350	1350
Capacity	m³	1,2	1,4	1,6
Load Capacity	kg	1200	1400	1600
Device weight	kg	400	450	510
Number of teeth	pcs.	7	8	9
Number of hydraulic cylinders	pcs.	2	2	2
Pressure in the hydraulic system	Mpa	18	18	18
Price	€	-	-	-

Lifting capacity given for agricultural products and loose materials 1m3-1200kg.

Mounting included in the price, available if the allow technical conditions of the device.

Special mounting (not from the manufacturer's official fixing table)

-

Hydraulic lock required for wheeled and telescopic loaders without supporting the third hydraulic section- additional payment.

-

Screw-on double beveled blade additional payment.

-

ŁKO	Units	ŁKO SNR 2000	ŁKO SNR 2200	ŁKO SNR 2400	ŁKO SNR 2600
Width	mm	2000	2200	2400	2600
Height	mm	960	960	960	960
Open Height	mm	1870	1870	1870	1870
Capacity	m³	1,4	1,55	1,7	1,85
Load Capacity	kg	1680	1860	2000	2220
Device weight	kg	880	930	1000	1050
Number of hydraulic cylinders	pcs.	2	2	2	2
Pressure in the hydraulic system	pcs.	18	18	18	18
Price	€	-	-	-	-

Lifting capacity given for agricultural products and loose materials 1m3-1200kg.

Mounting included in the price, available if the allow technical conditions of the device.

Special mounting (not from the manufacturer's official fixing table)

-

Hydraulic lock required for wheeled and telescopic loaders without supporting the third hydraulic section- additional payment.

-

Screw-on double beveled blade additional payment.

-

ŁKPŁ	Units	ŁKPŁ SNR 1800	ŁKPŁ SNR 2000	ŁKPŁ SNR 2200	ŁKPŁ SNR 2400
Width	mm	1800	2000	2200	2400
Height	mm	960	960	960	960
Open Height	mm	1500	1500	1500	1500
Capacity	m³	1	1,1	1,2	1,3
Load Capacity	kg	1200	1320	1440	1560
Device weight	kg	540	610	650	690
Number of hydraulic cylinders	pcs.	2	2	2	2
Pressure in the hydraulic system	Mpa	18	18	18	18
Price	€	-	-	-	-

Lifting capacity given for agricultural products and loose materials 1m3-1200kg.

Mounting included in the price, available if the allow technical conditions of the device.

Special mounting (not from the manufacturer's official fixing table)

-

Hydraulic lock required for wheeled and telescopic loaders without supporting the third hydraulic section- additional payment.

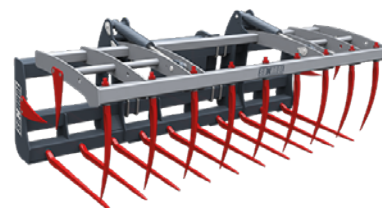
-

Screw-on double beveled blade additional payment.

-

Upper standard jaw- 3 reinforcing pipes.

Upper jaw 2 reinforcing pipes- optional on request.



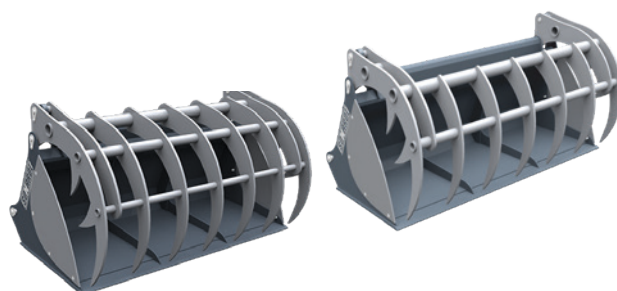
Crocodile clamp



Bucket-crocodile clamp



Chwytyk łyżko krokodyl objętościowy



Bucket-crocodile tempered tines

Cutters

Equipment for telehandlers

SONAROL

W

	Units	W SNR 1600
Width	mm	1600
Height	mm	850
Open Height	mm	1350
Bucket capacity	m³	0,4
Device capacity	m³	0,93
Device weight	kg	600+120
Number of teeth	pcs.	10+2
Number of hydraulic cylinders	pcs.	2
Pressure in the hydraulic system	Mpa	18
Price of set	€	-
Set without bucket price	€	-

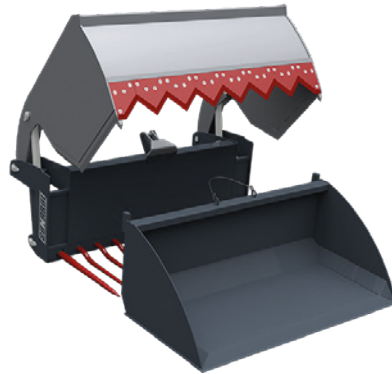
Special mounting (not from the manufacturer's official fixing table)

Attention! Some telehandlers models require a reduction frame- ask your supplier.

Mounting included in the price, available if the allow technical conditions of the device.

Special mounting (not from the manufacturer's official fixing table)

Hydraulic lock required for wheeled and telescopic loaders without supporting the third hydraulic section- additional payment.

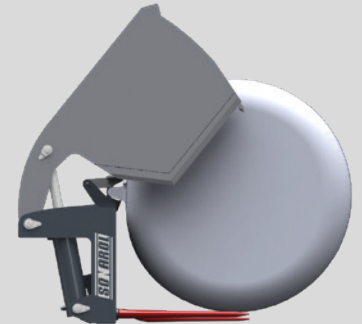
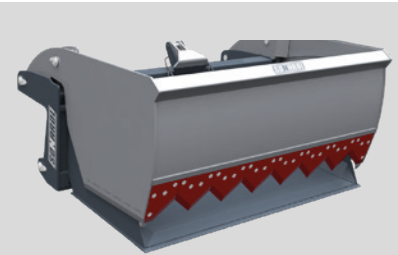


3in1

silage cutter

bale shearer with the functionality for holding the cut film or mesh

bucket for bulk materials



**Combi
cutter**

WK

	Units	WK SNR 1400	WK SNR 1600	WK SNR 2000
Width	mm	1400	1600	2000
Height	mm	850	850	850
Open Height	mm	950	950	950
Capacity	m³	0,88	1	1,25
Device weight	kg	470	520	660
Number of teeth	pcs.	8+2	10+2	12+4
Number of hydraulic cylinders	pcs.	2	2	2
Pressure in the hydraulic system	Mpa	18	18	18
Price	€	-	-	-

Mounting included in the price, available if the allow technical conditions of the device.

Special mounting (not from the manufacturer's official fixing table)

Hydraulic lock required for wheeled and telescopic loaders without supporting the third hydraulic section- additional payment.



**Cutter
for silage**

ŁWŁ4w1

	Units	ŁWŁ 4w1 SNR 1850	ŁWŁ 4w1 SNR 2050	ŁWŁ 4w1 SNR 2250	ŁWŁ 4w1 SNR 2450
Width	mm	1850	2050	2250	2450
Height	mm	800	800	800	800
Depth	mm	740	740	740	740
Capacity	m³	0,5	0,56	0,62	0,65
Load Capacity	kg	830	930	1030	1120
Device weight	kg	395	425	460	490
Number of hydraulic cylinders	pcs.	2	2	2	2
Pressure in the hydraulic system	Mpa	18	18	18	18
Price	€	-	-	-	-

Mounting included in the price, available if the allow technical conditions of the device.

Special mounting (not from the manufacturer's official fixing table)

-

Hydraulic lock required for wheeled and telescopic loaders without supporting the third hydraulic section- additional payment.

-



4 in 1 multi-pupose
bucket

ŁO

	Units	ŁO SNR 2000	ŁO SNR 2200	ŁO SNR 2400	ŁO SNR 2600
Width	mm	2000	2200	2400	2600
Height	mm	1075	1075	1075	1075
Depth	mm	1180	1180	1180	1180
Capacity	m³	1,6	1,75	1,9	2,05
Load Capacity	kg	1440	1550	1700	1850
Device weight	kg	617	634	658	692
Price	€	-	-	-	-

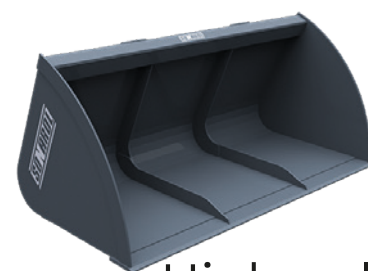
Mounting included in the price, available if the allow technical conditions of the device.

Special mounting (not from the manufacturer's official fixing table)

-

Screw-on double beveled blade additional payment.

-



High-volume
bucket

ŁDP

	Units	ŁDP SNR 2300	ŁDP SNR 2500	ŁDP SNR 2700
Width	mm	2300	2500	2700
Height	mm	1260	1260	1260
Depth	mm	1660	1660	1660
Capacity	m³	2,6	2,8	3
Load Capacity	kg	2600	2800	3000
Device weight	kg	890	945	980
Price	€	-	-	-

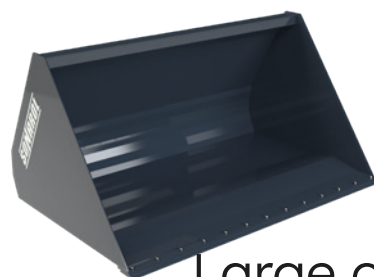
Mounting included in the price, available if the allow technical conditions of the device.

Special mounting (not from the manufacturer's official fixing table)

-

Screw-on double beveled blade additional payment.

-



Large capacity
bucket

WPŁ

	Units	WPŁ SNR 3500
Width	mm	1300
Height	mm	1180
Depth	mm	1350
Load Capacity	kg	3500
Device weight	kg	280
Price	€	-

Mounting included in the price, available if the allow technical conditions of the device.

Special mounting (not from the manufacturer's official fixing table)

-



Fork
for pallets

CBŁ

	Units	CBŁ SNR 1700
Width	mm	1700
Load Capacity	kg	900
Device weight	kg	215
Pressure in the hydraulic system	Mpa	18
Price	€	-

Mounting included in the price, available if the allow technical conditions of the device.

Special mounting (not from the manufacturer's official fixing table)

-

Hydraulic lock required for wheeled and telescopic loaders without supporting the third hydraulic section- additional payment.

-



Bale
clamp

Buckets/Grapples/Forks **SONAROL**

Equipment for mini-loaders

ŁUM

	Units	ŁUM SNR 900	ŁUM SNR 1000	ŁUM SNR 1100	ŁUM SNR 1200	ŁUM SNR 1300	ŁUM SNR 1400
Width	mm	900	1000	1100	1200	1300	1400
Height	mm	525	525	525	525	525	525
Depth	mm	620	620	620	620	620	620
Capacity	m³	0,161	0,18	0,198	0,217	0,235	0,254
Device weight	kg	78	83	88	93	97	105
Price	€	-	-	-	-	-	-

Mounting included in the price, available if the allow technical conditions of the device.

Special mounting (not from the manufacturer's official fixing table)

-

Hydraulic lock required for wheeled and telescopic loaders without supporting the third hydraulic section- additional payment.

-

Screw-on double beveled blade additional payment.

-



Universal
bucket

ŁWM 4w1

	Units	ŁWM 4w1 SNR 1050	ŁWM 4w1 SNR 1150	ŁWM 4w1 SNR 1250	ŁWM 4w1 SNR 1350	ŁWM 4w1 SNR 1450
Width	mm	1050	1150	1250	1350	1450
Height	mm	600	600	600	600	600
Depth	mm	540	540	540	540	540
Capacity	m³	0,2	0,22	0,24	0,26	0,28
Load Capacity	kg	340	370	400	440	470
Device weight	kg	168	177	185	195	205
Number of hydraulic cylinders	pcs.	2	2	2	2	2
Pressure in the hydraulic system	Mpa	18	18	18	18	18
Price	€	-	-	-	-	-

Mounting included in the price, available if the allow technical conditions of the device.

Mounting included in the price, available if the allow technical conditions of the device.

Special mounting (not from the manufacturer's official fixing table)

-

Hydraulic lock required for wheeled and telescopic loaders without supporting the third hydraulic section- additional payment.

-



4 in 1 multi-pupose
bucket

CDM

	Units	CDM
Width	mm	1200
Load Capacity	mm	1100
Load Capacity	kg	1000
Device weight	kg	177
Pressure in the hydraulic system	Mpa	18
Price	€	-

Mounting included in the price, available if the allow technical conditions of the device.

Special mounting (not from the manufacturer's official fixing table)

-

Hydraulic lock required for wheeled and telescopic loaders without supporting the third hydraulic section- additional payment.

-



Wood logs
grab

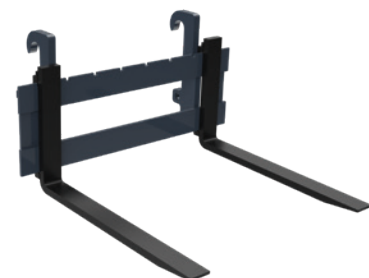
WPM

	Units	WP 1000
Width	mm	1000/1200
Height	mm	470
Depth	mm	980
Load Capacity	kg	1000
Device weight	kg	90
Price	€	-

Mounting included in the price, available if the allow technical conditions of the device.

Special mounting (not from the manufacturer's official fixing table)

-



Fork
for pallets

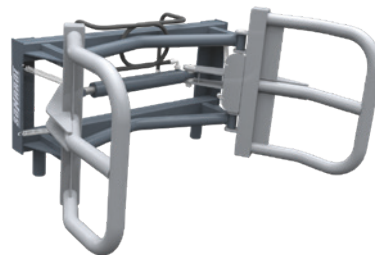
*Prices of additional options are not discounted.

CBEM

	Units	CBM SNR 1300
Width	mm	1330
Load Capacity	kg	700
Device weight	kg	140
Pressure in the hydraulic system	Mpa	18
Price	€	-

Mounting included in the price, available if the allow technical conditions of the device.

Special mounting (not from the manufacturer's official fixing table)	-
Special mounting (not from the manufacturer's official fixing table).	-
Faucheux surcharge, if the allow technical conditions of the device.	-
Hydraulic lock required for wheeled and telescopic loaders without supporting the third hydraulic section- additional payment.	-
Cannot be used on wheeled and telescopic loadres with a lifting capacity over 1200 kg.	-



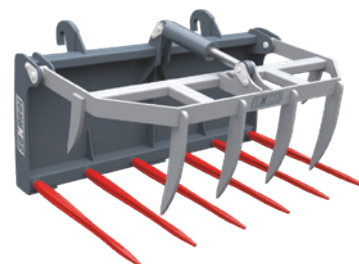
Bale clamp

CKM

	Units	CKM SNR 900	CKM SNR 1000	CKM SNR 1100	CKM SNR 1200	CKM SNR 1300	CKM SNR 1400
Width	mm	900	1000	1100	1200	1300	1400
Height	mm	630	630	630	630	630	630
Load Capacity	mm	800	800	800	800	800	800
Capacity	m³	0,36	0,4	0,44	0,48	0,52	0,56
Load Capacity	kg	290	320	355	390	420	435
Device weight	kg	120	125	135	140	150	165
Number of teeth	pcs.	5	5	6	6	7	7
Number of hydraulic cylinders	pcs.	1	1	1	1	1	1
Pressure in the hydraulic system	Mpa	18	18	18	18	18	18
Price	€	-	-	-	-	-	-

Mounting included in the price, available if the allow technical conditions of the device.

Special mounting (not from the manufacturer's official fixing table)	-
Hydraulic lock required for wheeled and telescopic loaders without supporting the third hydraulic section- additional payment.	-



Crocodile clamp

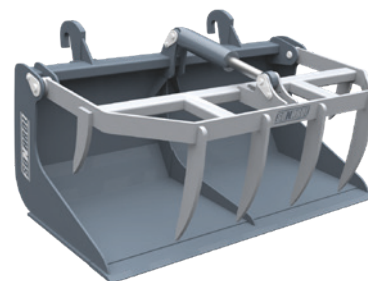
ŁKM

	Units	ŁKM SNR 900	ŁKM SNR 1000	ŁKM SNR 1100	ŁKM SNR 1200	ŁKM SNR 1300	ŁKM SNR 1400
Width	mm	900	1000	1100	1200	1300	1400
Height	mm	600	600	600	600	600	600
Load Capacity	mm	800	800	800	800	800	800
Capacity	m³	0,36	0,4	0,44	0,48	0,52	0,56
Load Capacity	kg	290	320	355	370	390	390
Device weight	kg	130	135	145	150	157	165
Number of hydraulic cylinders	pcs.	1	1	1	1	1	1
Pressure in the hydraulic system	Mpa	18	18	18	18	18	18
Price	€	-	-	-	-	-	-

Lifting capacity given for manure 1m³.

Mounting included in the price, available if the allow technical conditions of the device.

Special mounting (not from the manufacturer's official fixing table)	-
Hydraulic lock required for wheeled and telescopic loaders without supporting the third hydraulic section- additional payment.	-
Screw-on double beveled blade additional payment.	-



Bucket-crocodile clamp



ON	Type	Price
1.	ATLAS 14 – EURO	-
2.	AVANT – EURO	-
3.	BOBCAT (ON Pipe) – BOBCAT (ON Pipe)	-
4.	BOBCAT (ON Pipe) – EURO/SMS/MX	-
5.	BOBCAT (ON Pipe) – EURO/SMS/MX	-
6.	BOBCAT (ON PIPE) – CAT.3 LINKAGE	-
7.	CAT TH407C - EURO/SMS/MX	-
8.	CAT TH407C - MANITOU	-
9.	CLAAS SCORPION – EURO/SMS/MX	-
10.	CLAAS SCORPION – MANITOU	-
11.	CLAAS SCORPION – MERLO ZM2	-
12.	CLAAS TARGO K50 - EURO	-
13.	CLAAS TORION 535 – EURO	-
14.	DEUTZ FAHR – EURO/MX	-
15.	DIECI AGRI FARMER – EURO/SMS/MX	-
16.	DIECI AGRI FARMER – MANITOU	-
17.	DIECI MINI AGRI 25.6 – EURO/SMS/MX	-
18.	EURO – DEUTZ FAHR	-
19.	EURO - DIECI MINI AGRI FARM 25.6	-
20.	EURO - EURO/SMS	-
21.	EURO – SMS	-
22.	EURO – GIANT MAŁY	-
23.	EURO – MANITOU	-
24.	EURO – MX	-
25.	EURO – MERLO ZM2	-
26.	EURO – PICHON P126	-
27.	EURO – TRIANGLE	-
28.	EURO – TUZ. KAT.2	-
29.	FAUCHEUX – EURO	-
30.	GIANT – EURO	-
31.	HERCULES/EVERUN Large – EURO	-
32.	HERCULES/EVERUN Small – EURO	-
33.	JCB 520 – EURO/SMS	-
34.	JCB 520 – MX	-
35.	JCB 526 – EURO/SMS	-
36.	JCB 526 – MX	-
37.	JCB Q-FIT – TUZ.KAT.2	-
38.	JCB Q-FIT – TUZ.KAT.3N	-
39.	JCB Q-FIT – EURO/SMS	-
40.	JCB Q-FIT – EURO/JCB Q-FIT	-
41.	JCB Q-FIT – MERLO ZM2	-
42.	JCB Q-FIT – MX	-
43.	JCB Q-FIT - DEUTZ FAHR	-
44.	JCB Q-FIT – MANITOU	-
45.	JOHN DEERE – EURO/SMS	-
46.	JOHN DEERE – JCB Q-FIT	-

ON	Type	Price
47.	KRAMER LARGE – EURO	-
48.	LIEBHERR 506 – EURO	-
49.	MX – EURO/SMS	-
50.	MX – MANITOU	-
51.	MX – SMS	-
52.	MANITOU – BOBCAT (ON PIPE)	-
53.	MANITOU – EURO/SMS	-
54.	MANITOU – JCB Q-FIT	-
55.	MANITOU – MX	-
56.	MANITOU – DEUTZ FAHR	-
57.	MANITOU – MERLO ZM2	-
58.	MANITOU – TUZ KAT.2	-
59.	MANITOU – TUZ KAT.3N	-
60.	MERLO ZM2 – EURO/SMS	-
61.	MERLO ZM2 – MANITOU	-
62.	MERLO ZM2 – TUZ KAT.2	-
63.	MERLO ZM2 – MX	-
64.	MERLO ZM3 - EURO	-
65.	MUSTANG – EURO	-
66.	MUSTANG HYDRAULIK – EURO	-
67.	NEW HOLLAND – EURO/SMS	-
68.	NEW HOLLAND – MX	-
69.	NEW HOLLAND – TUZ KAT.2	-
70.	NEW HOLLAND BACKHOE LOADER – B5115B EURO	-
71.	PAUS – EURO	-
72.	PICHON126 – EURO/SMS	-
73.	PICHON126 – MX	-
74.	SCHAFFER (SQUARE FRAME BAR) – EURO/SMS/MX	-
75.	SCHAFFER DYNAMIC CLASS – EURO/SMS/MX	-
76.	SCHAFFER DYNAMIC CLASS – NEW HOLLAND	-
77.	SCHAFFER COMPACT CLASS – EURO/SMS/MX	-
78.	SMS – EURO/MX	-
79.	SMS – MANITOU	-
80.	STRIEGEL – EURO/SMS	-
81.	TAKMANN 916 – EURO	-
82.	TEREX 730 – MANITOU	-
83.	TEREX 730 – MANITOU	-
84.	TEREX TL - 120 EURO	-
85.	TUZ (front linkeige) – EURO	-
86.	TUZ (front linkeige) – MAILLEUX	-
87.	TUZ cat.2 (front linkage) – MERLO ZM 2	-
88.	TUZ cat.2 (front linkage) – NEW HOLLAND	-
89.	VOLVO BM – EURO/SMS	-
90.	VOLVO L30B Z-X – EURO/SMS	-
91.	WEIDEMANN - EURO/SMS	-
92.	ZETTELMEYER ZL502 - EURO	-



SONAROL

Sonarol Sp.j. Najda
ul. Polna 27, 18-420 Jedwabne
tel./fax +48 86 217 22 11
www.sonarol.pl

August 2024